

Reducer HRD



Technical data	
Marking according to 2014/34/EU	II 2 GD Ex db IIC Gb II 2 GD Ex eb IIC Gb II 2 GD Ex tb IIIC Db
EC-Type Examination Certificate	DNV 22 ATEX 62580X
IECEX Certificate of Conformity	IECEX DNV 22.0091X
IECEX marking	Ex db IIC Gb Ex eb IIC Gb Ex tb IIIC Db
Type of protection	Ex d, Ex e, Ex t
Permissible ambient temperature	-55°C to +160°C
Protection rating	IP66 / IP68 (1.5 m, 2 h)
Material	Nickel plated brass*, stainless steel 316L, brass, electroless nickel plated*

Product coding

HRD	2M	1N	N		
Code	Male thread size		Female thread size	Material	
HRD	Metric	NPT	Metric	NPT	N - Nickel plated brass*
	SM - M12	0N - 3/8"	SM - M12	0N - 3/8"	S - SS316L
	0M - M16	1N - 1/2"	0M - M16	1N - 1/2"	B - Brass
	1M - M20	2N - 3/4"	1M - M20	2N - 3/4"	E - Electroless nickel plated*
	2M - M25	3N - 1"	2M - M25	3N - 1"	
	3M - M32	4N - 1.1/4"	3M - M32	4N - 1.1/4"	
	4M - M40	5N - 1.1/2"	4M - M40	5N - 1.1/2"	
	5M - M50	6N - 2"	5M - M50	6N - 2"	
	6M - M63	6N - 2.1/2"	6M - M63	6N - 2.1/2"	
	7M - M75	8N - 3"	7M - M75	8N - 3"	
	8M - M90	9N - 4"	8M - M90	9N - 4"	
	9M - M100		9M - M100		

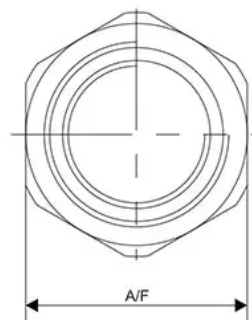
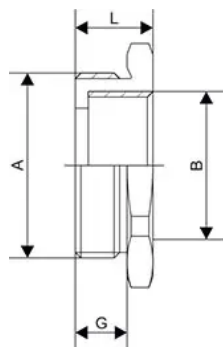
* - Available only on special order

Metric to metric reducer

"A"	"B"	"L"	"A/F"	"G"	Ordering code
M20x1.5	M12x1.5	22	25	16	HRD 1M0M
M20x1.5	M16x1.5	22	25	16	HRD 1M0M
M25x1.5	M12x1.5	22	30	16	HRD 2M0M
M25x1.5	M16x1.5	22	30	16	HRD 2M0M
M25x1.5	M20x1.5	22	30	16	HRD 3M0M
M32x1.5	M16x1.5	22	36	16	HRD 3M1M
M32x1.5	M20x1.5	22	36	16	HRD 3M2M
M32x1.5	M25x1.5	22	36	16	HRD 4M1M
M40x1.5	M20x1.5	22	45	16	HRD 4M2M
M40x1.5	M25x1.5	22	45	16	HRD 4M3M
M40x1.5	M32x1.5	22	45	16	HRD 5M1M
M50x1.5	M20x1.5	24	55	16	HRD 5M1M
M50x1.5	M25x1.5	24	55	16	HRD 5M2M
M50x1.5	M32x1.5	24	55	16	HRD 5M3M
M50x1.5	M40x1.5	24	55	16	HRD 5M4M
M63x1.5	M50x1.5	24	68	16	HRD 6M2M
M63x1.5	M25x1.5	24	68	16	HRD 6M3M
M63x1.5	M32x1.5	24	68	16	HRD 6M4M
M63x1.5	M40x1.5	24	68	16	HRD 6M5M
M63x1.5	M50x1.5	24	68	16	HRD 6M5M
M75x1.5	M63x1.5	28	80	20	HRD 7M2M
M75x1.5	M32x1.5	28	80	20	HRD 7M3M
M75x1.5	M40x1.5	28	80	20	HRD 7M4M
M75x1.5	M50x1.5	28	80	20	HRD 7M5M
M75x1.5	M63x1.5	28	80	20	HRD 7M6M
M90x1.5	M32x1.5	28	95	20	HRD 8M3M
M90x1.5	M40x1.5	28	95	20	HRD 8M4M
M90x1.5	M50x1.5	28	95	20	HRD 8M5M
M90x1.5	M63x1.5	28	95	20	HRD 8M6M
M90x1.5	M75x1.5	28	95	20	HRD 8M7M
M100x1.5	M40x1.5	30	110	20	HRD 9M4M
M100x1.5	M50x1.5	30	110	20	HRD 9M5M
M100x1.5	M63x1.5	30	110	20	HRD 9M6M
M100x1.5	M75x1.5	30	110	20	HRD 9M7M
M100x1.5	M90x1.5	30	110	20	HRD 9M8M

Metric to NPT reducer

"A"	"B"	"L"	"A/F"	"G"	Ordering code
M20x1.5	3/8" NPT	22	25	16	HRD 1M0N
M25x1.5	3/8" NPT	22	30	16	HRD 2M0N
M25x1.5	1/2" NPT	22	30	16	HRD 2M1N
M32x1.5	1/2" NPT	22	36	16	HRD 3M1N
M32x1.5	3/4" NPT	22	36	16	HRD 3M2N
M40x1.5	1/2" NPT	22	45	16	HRD 4M1N
M40x1.5	3/4" NPT	22	45	16	HRD 4M2N
M40x1.5	1" NPT	22	45	16	HRD 4M3N
M50x1.5	1/2" NPT	22	55	16	HRD 5M1N
M50x1.5	3/4" NPT	22	55	16	HRD 5M2N
M50x1.5	1" NPT	22	55	16	HRD 5M3N
M50x1.5	1.1/4" NPT	22	55	16	HRD 5M4N
M63x1.5	3/4" NPT	22	68	16	HRD 6M2N
M63x1.5	1" NPT	22	68	16	HRD 6M3N
M63x1.5	1.1/4" NPT	22	68	16	HRD 6M4N
M63x1.5	1.1/2" NPT	22	68	16	HRD 6M5N
M75x1.5	1" NPT	28	80	20	HRD 7M3N
M75x1.5	1.1/4" NPT	28	80	20	HRD 7M5N
M75x1.5	1.1/2" NPT	28	80	20	HRD 7M5N
M75x1.5	2" NPT	28	80	20	HRD 7M6N
M90x1.5	1" NPT	28	95	20	HRD 8M3N
M90x1.5	1.1/4" NPT	28	95	20	HRD 8M4N
M90x1.5	1.1/2" NPT	28	95	20	HRD 8M5N
M90x1.5	2" NPT	28	95	20	HRD 8M6N
M90x1.5	2.1/2" NPT	28	95	20	HRD 8M7N
M100x1.5	1.1/4" NPT	32	110	22	HRD 9M4N
M100x1.5	1.1/2" NPT	32	110	22	HRD 9M5N
M100x1.5	2" NPT	32	110	22	HRD 9M6N
M100x1.5	2.1/2" NPT	32	110	22	HRD 9M7N
M100x1.5	3" NPT	32	110	22	HRD 9M8N



NPT to metric reducer

"A"	"B"	"L"	"A/F"	"G"	Ordering code
3/8" NPT	M12x1.5	22	20	16	HRD 0N00M
1/2" NPT	M12x1.5	27	25	21	HRD 1N00M
1/2" NPT	M16x1.5	27	25	21	HRD 1N0M
3/4" NPT	M12x1.5	27	30	21	HRD 2N00M
3/4" NPT	M16x1.5	27	30	21	HRD 2N0M
3/4" NPT	M20x1.5	27	30	21	HRD 2N1M
1" NPT	M12x1.5	32	36	26	HRD 3N00M
1" NPT	M16x1.5	32	36	26	HRD 3N0M
1" NPT	M20x1.5	32	36	26	HRD 3N1M
1" NPT	M25x1.5	32	36	26	HRD 3N2M
1.1/4" NPT	M12x1.5	32	45	26	HRD 4N00M
1.1/4" NPT	M16x1.5	32	45	26	HRD 4N0M
1.1/4" NPT	M20x1.5	32	45	26	HRD 4N1M
1.1/4" NPT	M25x1.5	32	45	26	HRD 4N2M
1.1/4" NPT	M32x1.5	32	45	26	HRD 4N3M
1.1/2" NPT	M20x1.5	35	55	27	HRD 5N1M
1.1/2" NPT	M25x1.5	35	55	27	HRD 5N2M
1.1/2" NPT	M32x1.5	35	55	27	HRD 5N3M
1.1/2" NPT	M40x1.5	35	55	27	HRD 5N4M
2" NPT	M25x1.5	36	68	28	HRD 6N2M
2" NPT	M32x1.5	36	68	28	HRD 6N3M
2" NPT	M40x1.5	36	68	28	HRD 6N4M
2" NPT	M50x1.5	36	68	28	HRD 6N5M
2.1/2" NPT	M32x1.5	51	80	41	HRD 7N3M
2.1/2" NPT	M40x1.5	51	80	41	HRD 7N4M
2.1/2" NPT	M50x1.5	51	80	41	HRD 7N5M
2.1/2" NPT	M63x1.5	51	80	41	HRD 7N6M
3" NPT	M32x1.5	54	95	42	HRD 8N3M
3" NPT	M40x1.5	54	95	42	HRD 8N4M
3" NPT	M50x1.5	54	95	42	HRD 8N5M
3" NPT	M63x1.5	54	95	42	HRD 8N6M
3" NPT	M75x1.5	54	95	42	HRD 8N7M
4" NPT	M40x1.5	57	120	45	HRD 9N4M
4" NPT	M50x1.5	57	120	45	HRD 9N5M
4" NPT	M63x1.5	57	120	45	HRD 9N6M
4" NPT	M75x1.5	57	120	45	HRD 9N7M
4" NPT	M90x1.5	57	120	45	HRD 9N8M

NPT to NPT reducer

"A"	"B"	"L"	"A/F"	"G"	Ordering code
1/2" NPT	3/8" NPT	29	25	21	HRD 1N0N
3/4" NPT	1/2" NPT	29	30	21	HRD 2N1N
1" NPT	1/2" NPT	34	36	26	HRD 3N1N
1" NPT	3/4" NPT	34	36	26	HRD 3N2N
1.1/4" NPT	1/2" NPT	34	45	26	HRD 4N1N
1.1/4" NPT	3/4" NPT	34	45	26	HRD 4N2N
1.1/4" NPT	1" NPT	34	45	26	HRD 4N3N
1.1/2" NPT	1/2" NPT	35	55	27	HRD 5N1N
1.1/2" NPT	3/4" NPT	35	55	27	HRD 5N2N
1.1/2" NPT	1" NPT	35	55	27	HRD 5N3N
1.1/2" NPT	1.1/4" NPT	35	55	27	HRD 5N4N
2" NPT	3/4" NPT	36	68	28	HRD 6N2N
2" NPT	1" NPT	36	68	28	HRD 6N3N
2" NPT	1.1/4" NPT	36	68	28	HRD 6N4N
2" NPT	1.1/2" NPT	36	68	28	HRD 6N5N
2.1/2" NPT	3/4" NPT	51	80	41	HRD 7N3N
2.1/2" NPT	1" NPT	51	80	41	HRD 7N4N
2.1/2" NPT	1.1/4" NPT	51	80	41	HRD 7N5N
2.1/2" NPT	1.1/2" NPT	51	80	41	HRD 7N6N
2.1/2" NPT	2" NPT	51	80	41	HRD 7N7N
3" NPT	1.1/4" NPT	54	95	42	HRD 8N4N
3" NPT	1.1/2" NPT	54	95	42	HRD 8N5N
3" NPT	2" NPT	54	95	42	HRD 8N6N
3" NPT	2.1/2" NP	54	95	42	HRD 8N7N
4" NPT	1.1/2" NPT	57	120	45	HRD 9N5N
4" NPT	2" NPT	57	120	45	HRD 9N6N
4" NPT	2.1/2" NP	57	120	45	HRD 9N7N
4" NPT	3" NPT	57	120	45	HRD 9N8N

